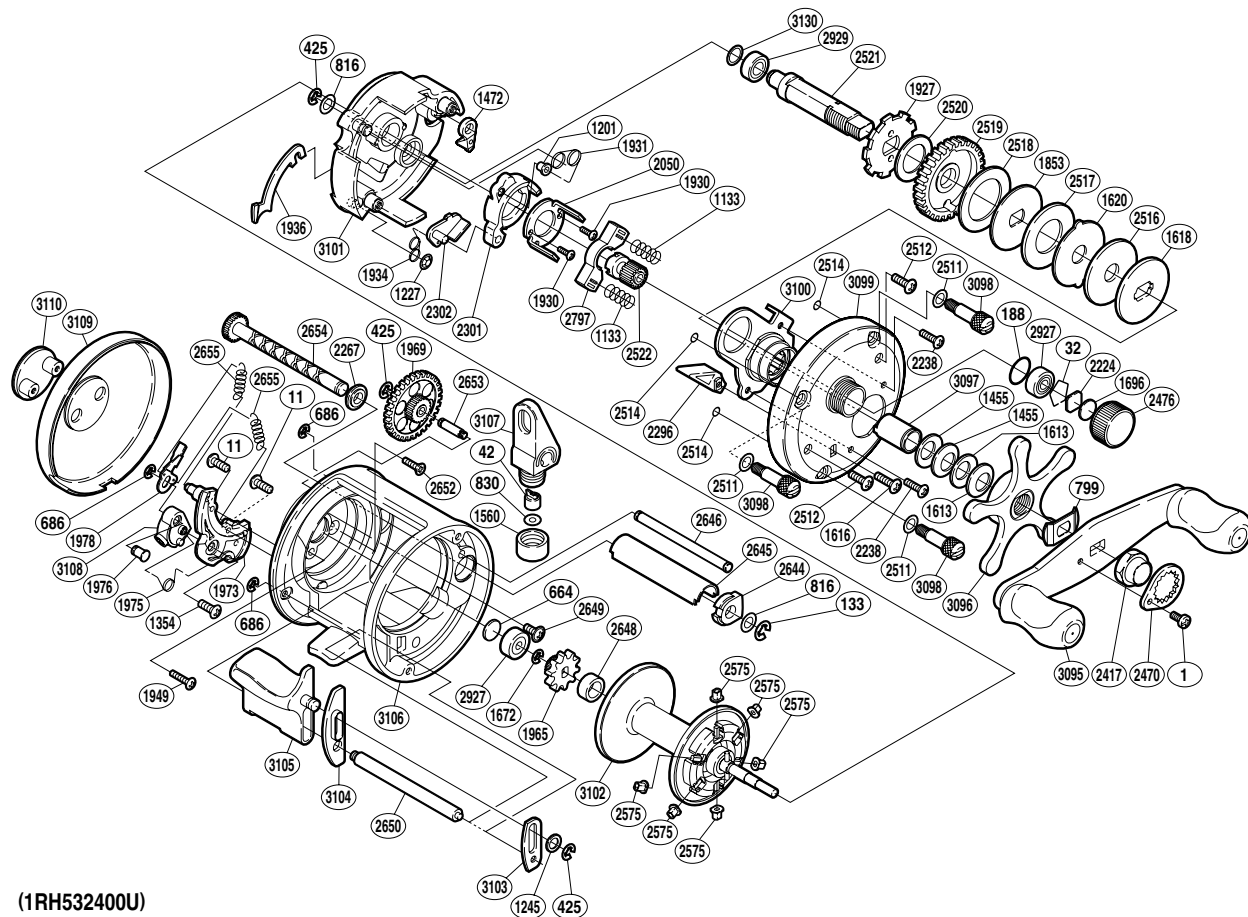


SHIMANO®

CARDIFF 

CDF-400A



(1RH532400U)

| Part No. | Description | Part No. | Description | Part No. | Description |
|----------|-------------------------|----------|------------------------|----------|---------------------------|
| BNT0001 | Screw | BNT1934 | Clutch Pawl Spring | BNT2644 | Worm Bushing A |
| BNT0011 | Screw | BNT1936 | Clutch Plate | BNT2645 | Level Wind Guard |
| BNT0032 | Bearing Retainer | BNT1949 | Screw | BNT2646 | Stabilizer Bar |
| BNT0042 | Line Guide Pawl | BNT1965 | Idle Gear A | BNT2648 | Idle Gear A Bush |
| BNT0133 | E Lock | BNT1969 | Idle Gear B | BNT2649 | Screw |
| BNT0188 | O Ring | BNT1973 | Click Plate | BNT2650 | Clutch Button Support Bar |
| BNT0425 | E Lock | BNT1975 | Click Switch Spring | BNT2652 | Screw |
| BNT0664 | Spacer B | BNT1976 | Click Shaft | BNT2653 | Idle Gear B Shaft |
| BNT0686 | E Lock | BNT1978 | Click Pawl | BNT2654 | Worm Shaft |
| BNT0799 | Friction Washer | BNT2050 | Clutch Cam Retainer | BNT2655 | Click Spring |
| BNT0816 | Washer | BNT2224 | Spool Tension Spacer A | BNT2797 | Yoke |
| BNT0830 | Spacer | BNT2238 | Screw | BNT2927 | Ball Bearing |
| BNT1133 | Yoke Spring | BNT2267 | Worm Bushing B | BNT2929 | Ball Bearing |
| BNT1201 | Retractor Spring Collar | BNT2296 | Return Pin Guide | BNT3095 | Handle Assembly |
| BNT1227 | Push Nut (SPN-2) | BNT2301 | Clutch Cam | BNT3096 | Star Drag |
| BNT1245 | Spacer | BNT2302 | Clutch Pawl | BNT3097 | Roller Clutch Inner Tube |
| BNT1354 | Screw | BNT2417 | Handle Nut | BNT3098 | Side Plate Nut |
| BNT1455 | Drag Spring Washer H | BNT2470 | Handle Nut Plate | BNT3099 | Right Side Plate |
| BNT1472 | Anti-Reverse Pawl | BNT2476 | Cast Control Cap | BNT3100 | Roller Clutch Assembly |
| BNT1560 | Pawl Cap | BNT2511 | Washer | BNT3101 | Set Plate |
| BNT1613 | Drag Spring Washer L | BNT2512 | Screw | BNT3102 | Spool Assembly |
| BNT1616 | Screw | BNT2514 | O Ring | BNT3103 | Clutch Button Guide A |
| BNT1618 | Key Washer C | BNT2516 | Drag Washer AG | BNT3104 | Clutch Button Guide B |
| BNT1620 | Eared Washer | BNT2517 | Drag Washer CG | BNT3105 | Quick-Fire II Clutch Bar |
| BNT1672 | E Lock | BNT2518 | Drag Washer BG | BNT3106 | One-Piece Frame |
| BNT1696 | Cast Control Spacer B | BNT2519 | Drive Gear | BNT3107 | Line Guide |
| BNT1853 | Key Washer A | BNT2520 | Drive Shaft Washer B | BNT3108 | Click Switch |
| BNT1927 | Anti-Reverse Ratchet | BNT2521 | Drive Shaft | BNT3109 | Left Side Plate |
| BNT1930 | Screw | BNT2522 | Pinion Gear | BNT3110 | Side I.D. Plate |
| BNT1931 | Retractor Spring | BNT2575 | Brake Collar | BNT3130 | Washer |

(160818)