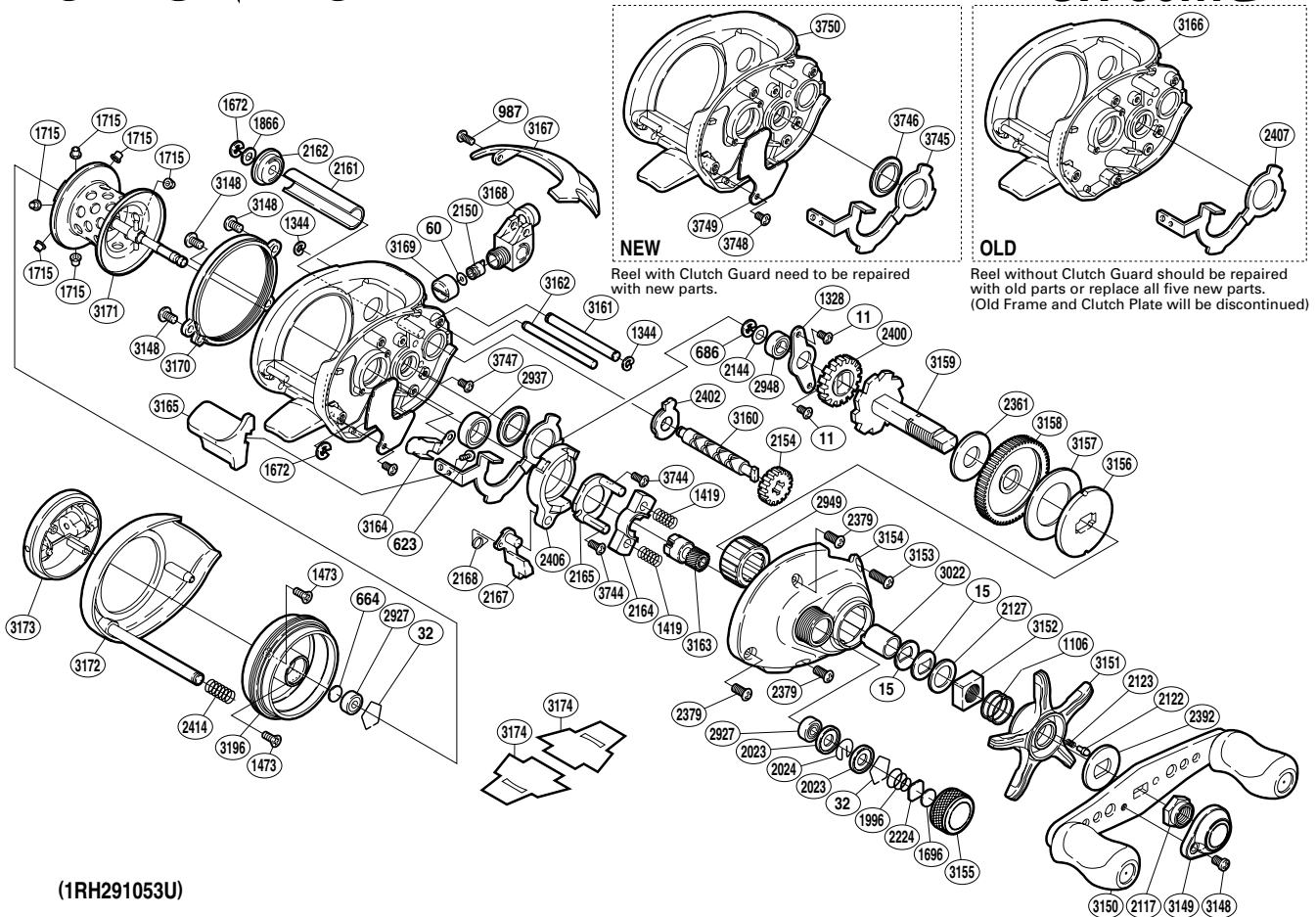


SHIMANO®

CHRONARCH

CH-50MG



(1RH291053U)

Part No.	Description	Part No.	Description	Part No.	Description
BNT0011	Screw	BNT2162	Worm Bushing B	BNT3158	Drive Gear
BNT0015	Drag Spring Washer	BNT2164	Yoke	BNT3159	Drive Shaft
BNT0032	Bearing Retainer	BNT2165	Clutch Cam Retainer	BNT3160	Worm Shaft
BNT0060	Spacer	BNT2167	Clutch Pawl	BNT3161	Line Guard
BNT0623	Screw	BNT2168	Clutch Pawl Spring	BNT3162	Stabilizer Bar
BNT0664	Spacer B	BNT2224	Spool Tension Spacer A	BNT3163	Pinion Gear
BNT0686	E Lock	BNT2361	Drag Washer A	BNT3164	Clutch Guard
BNT0987	Screw	BNT2379	Screw	BNT3165	Quick-Fire II Clutch Bar
BNT1106	Star Drag Spring	BNT2392	Star Drag Click Plate	BNT3167	Thumb Rest
BNT1328	Drive Shaft Retainer	BNT2400	Idle Gear A	BNT3168	Line Guide
BNT1344	C Lock	BNT2402	Worm Bushing A	BNT3169	Pawl Cap
BNT1419	Yoke Spring	BNT2406	Clutch Cam	BNT3170	Left Side Frame Plate
BNT1473	Screw	BNT2414	Left Side Plate Spring	BNT3171	Spool Assembly
BNT1672	E Lock	BNT2927	Ball Bearing	BNT3172	Left Side Plate
BNT1696	Cast Control Spacer B	BNT2937	Ball Bearing	BNT3173	Turnkey Dial
BNT1715	Brake Collar (red)	BNT2948	Ball Bearing	BNT3196	Brake Case
BNT1866	Spacer	BNT2949	Roller Clutch Bearing	BNT3744	Screw
BNT1996	Spool Tension Spring	BNT3022	Roller Clutch Inner Tube	BNT3745	Clutch Plate
BNT2023	Spool Shaft Clip Holder	BNT3148	Screw	BNT3746	Clutch Plate Shaft Support
BNT2024	Spool Shaft Clip	BNT3149	Handle Nut Plate	BNT3747	Screw
BNT2117	Handle Nut	BNT3150	Handle Assembly	BNT3748	Screw
BNT2122	Click Pin	BNT3151	Star Drag	BNT3749	Clutch Guard B
BNT2123	Click Spring	BNT3152	Star Drag Nut	BNT3750	One-Piece Frame
BNT2127	Star Drag Spacer	BNT3153	Screw		
BNT2144	Washer	BNT3154	Right Side Plate	BNT2407	Clutch Plate
BNT2150	Line Guide Pawl	BNT3155	Cast Control Cap	BNT3166	One-Piece Frame
BNT2154	Idle Gear C	BNT3156	Key Washer		
BNT2161	Level Wind Guard	BNT3157	Drag Washer C	BNT3174	Reel Seat Spacer

(180630)