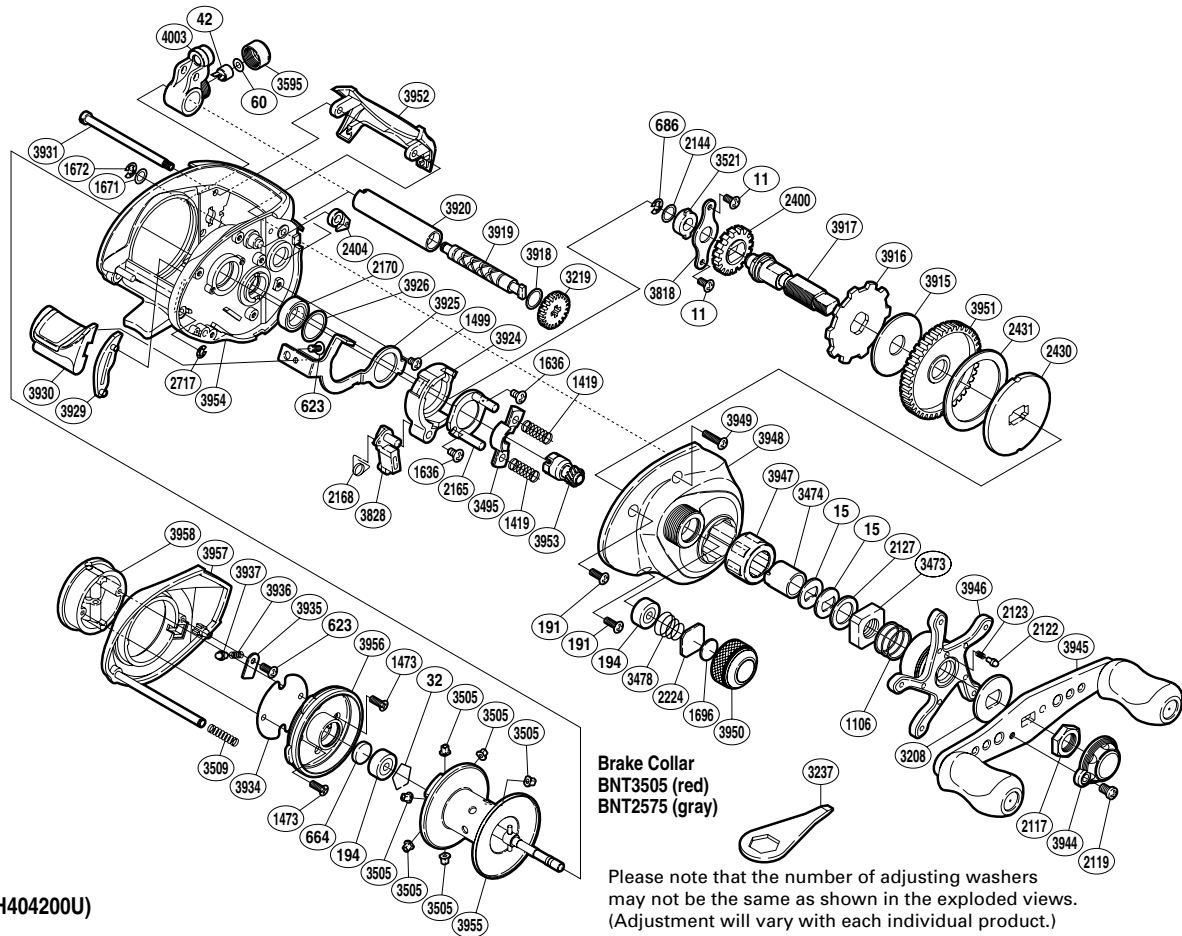


SHIMANO

CITICA

CI-200E



(1RH404200U)

Part No.	Description	Part No.	Description	Part No.	Description
BNT0011	Screw	BNT2224	Spool Tension Spacer	BNT3929	Clutch Bar Guide
BNT0015	Drag Spring Washer	BNT2400	Idle Gear	BNT3930	Quick-Fire II Clutch Bar
BNT0032	Bearing Retainer	BNT2404	Anti-Reverse Pawl	BNT3931	Level Wind Guide
BNT0042	Line Guide Pawl	BNT2430	Key Washer	BNT3934	Brake Case Spacer
BNT0060	Spacer	BNT2431	Drag Washer	BNT3935	Brake Spring Retainer
BNT0191	Screw	BNT2717	E Lock	BNT3936	Click Spring
BNT0194	Ball Bearing	BNT3208	Star Drag Click Plate	BNT3937	Click Pin
BNT0623	Screw	BNT3219	Idle Gear	BNT3944	Handle Retainer
BNT0664	Spacer B	BNT3473	Star Drag Nut	BNT3945	Handle Assembly
BNT0686	E Lock	BNT3474	Roller Clutch Inner Tube	BNT3946	Star Drag
BNT1106	Star Drag Spring	BNT3478	Spool Tension Spring	BNT3947	Roller Clutch Bearing
BNT1419	Yoke Spring	BNT3495	Yoke	BNT3948	Right Side Plate
BNT1473	Screw	BNT3505	Brake Collar (red)	BNT3949	Screw
BNT1499	Screw	BNT3509	Side Plate Spring	BNT3950	Cast Control Cap
BNT1636	Screw	BNT3521	Drive Shaft Bushing	BNT3951	Drive Gear
BNT1671	Washer	BNT3595	Pawl Cap	BNT3952	Level Wind Protector
BNT1672	E Lock	BNT3818	Drive Shaft Retainer	BNT3953	Pinion Gear
BNT1696	Cast Control Spacer	BNT3828	Clutch Pawl	BNT3954	One-Piece Frame
BNT2117	Handle Nut	BNT3915	Drag Washer	BNT3955	Spool Assembly
BNT2119	Screw	BNT3916	Anti-Reverse Ratchet	BNT3956	Brake Case
BNT2122	Click Pin	BNT3917	Drive Shaft	BNT3957	Left Side Plate
BNT2123	Click Spring	BNT3918	Washer	BNT3958	Turnkey Dial
BNT2127	Star Drag Spacer	BNT3919	Worm Shaft	BNT4003	Line Guide
BNT2144	Washer	BNT3920	Level Wind Guard		
BNT2165	Clutch Cam Retainer	BNT3924	Clutch Cam		
BNT2168	Clutch Pawl Spring	BNT3925	Clutch Plate	BNT2575	Brake Collar (gray) (accessory)
BNT2170	Ball Bearing	BNT3926	Washer	BNT3237	Wrench (accessory)

(200707)