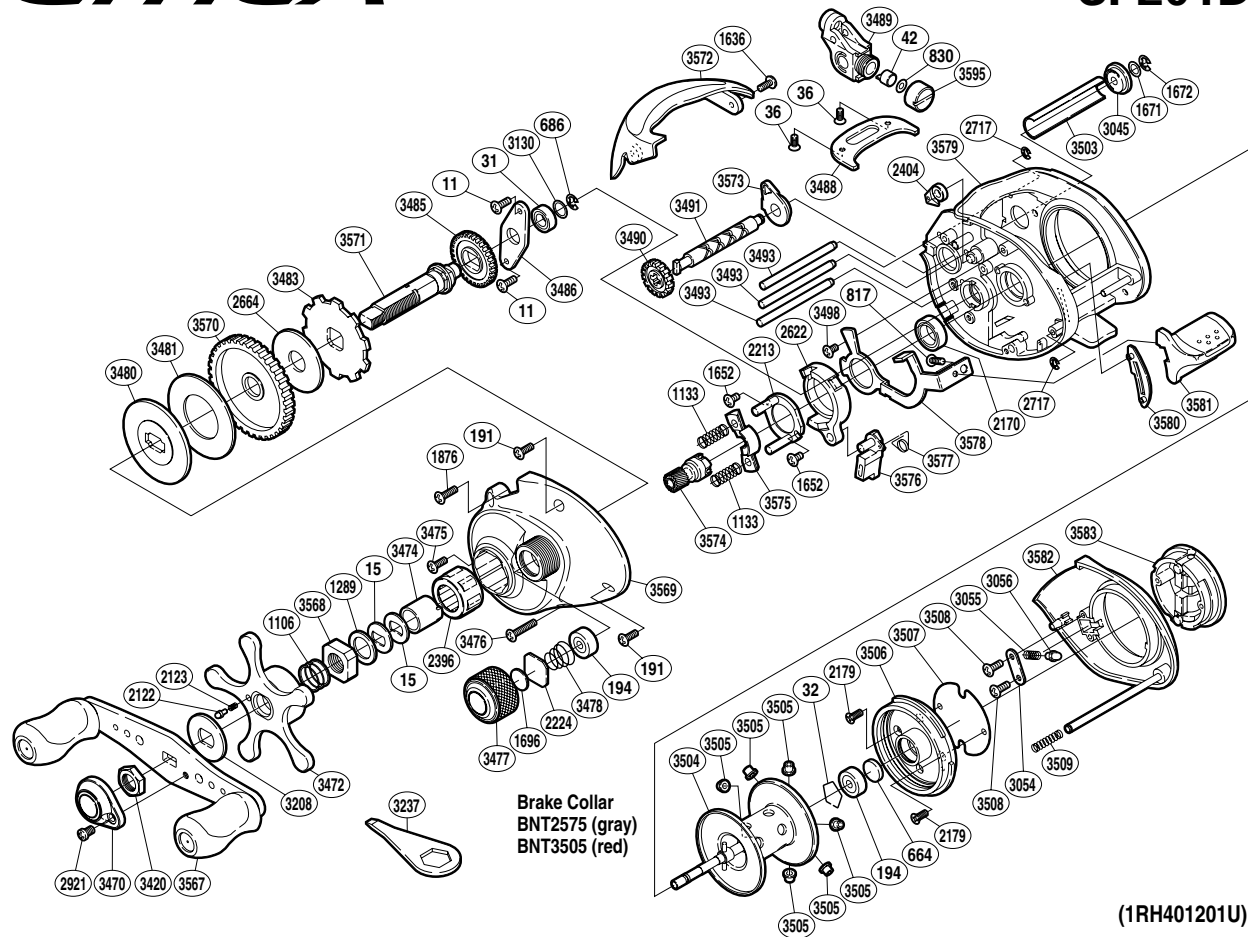


# SHIMANO®

## CITICA

### CI-201D



Part No.	Description	Part No.	Description	Part No.	Description
BNT0011	Screw	BNT2622	Clutch Cam	BNT3503	Level Wind Guard
BNT0015	Drag Spring Washer	BNT2664	Drag Washer	BNT3504	Spool Assembly
BNT0031	Ball Bearing	BNT2717	E Lock	BNT3505	Brake Collar (Red)
BNT0032	Bearing Retainer	BNT2921	Screw	BNT3506	Brake Case
BNT0036	Screw	BNT3045	Worm Bushing B	BNT3507	Brake Case Spacer
BNT0042	Line Guide Pawl	BNT3054	Click Pin Retainer	BNT3508	Screw
BNT0191	Screw	BNT3055	Click Spring	BNT3509	Side Plate Spring
BNT0194	Ball Bearing	BNT3056	Click Pin	BNT3567	Handle Assembly
BNT0664	Spacer B	BNT3130	Washer	BNT3568	Star Drag Nut
BNT0686	E Lock	BNT3208	Star Drag Click Plate	BNT3569	Left Side Plate
BNT0817	Screw	BNT3420	Handle Nut	BNT3570	Drive Gear
BNT0830	Spacer	BNT3470	Handle Nut Plate	BNT3571	Drive Shaft
BNT1106	Star Drag Spring	BNT3472	Star Drag	BNT3572	Thumb Rest
BNT1133	Yoke Spring	BNT3474	Roller Clutch Inner Tube	BNT3573	Worm Bushing A
BNT1289	Star Drag Spacer	BNT3475	Screw	BNT3574	Pinion Gear
BNT1636	Screw	BNT3476	Screw	BNT3575	Yoke
BNT1652	Screw	BNT3477	Cast Control Cap	BNT3576	Clutch Pawl
BNT1671	Washer	BNT3478	Spool Tension Spring	BNT3577	Clutch Pawl Spring
BNT1672	E Lock	BNT3480	Key Washer	BNT3578	Clutch Plate
BNT1696	Cast Control Spacer	BNT3481	Drag Washer	BNT3579	One-Piece Frame
BNT1876	Screw	BNT3483	Anti-Reverse Ratchet	BNT3580	Clutch Bar Guide
BNT2122	Click Pin	BNT3485	Idle Gear A	BNT3581	Quick-Fire II Clutch Bar
BNT2123	Click Spring	BNT3486	Drive Shaft Retainer	BNT3582	Right Side Plate
BNT2170	Ball Bearing	BNT3488	Line Guard	BNT3583	Turnkey Dial
BNT2179	Screw	BNT3489	Line Guide	BNT3595	Pawl Cap
BNT2213	Clutch Cam Retainer	BNT3490	Idle Gear C		
BNT2224	Spool Tension Spacer	BNT3491	Worm Shaft		
BNT2396	Roller Clutch Bearing	BNT3493	Stabilizer Bar	BNT2575	Brake Collar (gray) (accessory)
BNT2404	Anti-Reverse Pawl	BNT3498	Screw	BNT3237	Wrench (accessory)