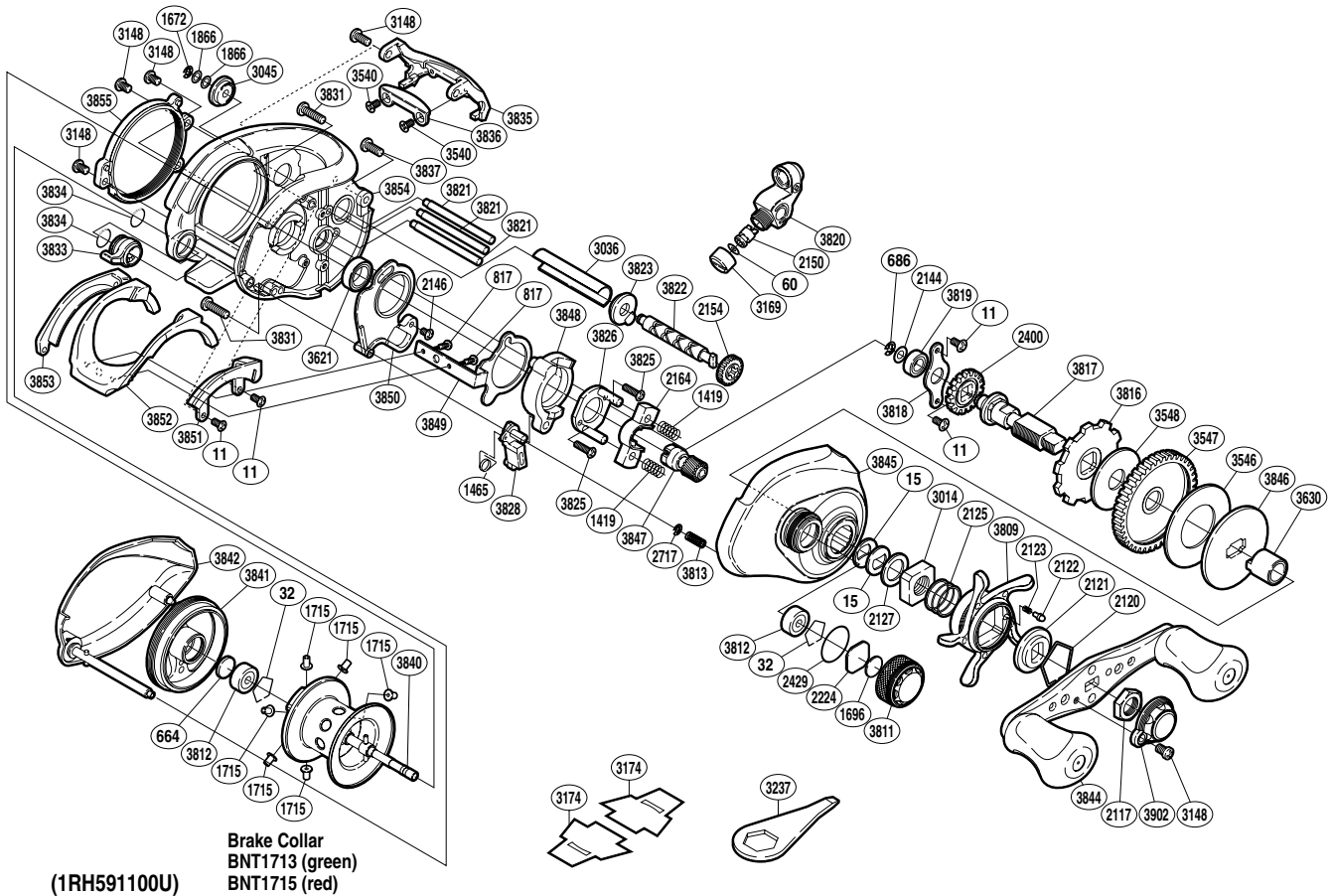


SHIMANO

CORE S A-RB

COR-100MGFV



Part No.	Description	Part No.	Description	Part No.	Description
BNT0011	Screw	BNT2429	O Ring	BNT3828	Clutch Pawl
BNT0015	Drag Spring Washer	BNT2717	E Lock	BNT3831	Screw
BNT0032	Bearing Retainer	BNT3014	Star Drag Nut	BNT3833	Side Plate Cam Lever
BNT0060	Spacer	BNT3036	Level Wind Guard	BNT3834	O Ring
BNT0664	Spacer B	BNT3045	Worm Bushing B	BNT3835	Level Wind Protector
BNT0686	E Lock	BNT3148	Screw	BNT3836	Line Guard Retainer
BNT0817	Screw	BNT3169	Pawl Cap	BNT3837	Screw
BNT1419	Yoke Spring	BNT3540	Screw	BNT3840	Spool Assembly
BNT1465	Clutch Pawl Spring	BNT3546	Drag Washer	BNT3841	Brake Case
BNT1672	E Lock	BNT3547	Drive Gear	BNT3842	Left Side Plate
BNT1696	Cast Control Spacer	BNT3548	Drag Washer	BNT3844	Handle Assembly
BNT1715	Brake Collar (red)	BNT3621	Ball Bearing	BNT3845	Right Side Plate
BNT1866	Spacer	BNT3630	Roller Clutch Inner Tube	BNT3846	Key Washer
BNT2117	Handle Nut	BNT3809	Star Drag	BNT3847	Pinion Gear
BNT2120	Click Plate Retainer	BNT3811	Cast Control Cap	BNT3848	Clutch Cam
BNT2121	Star Drag Click	BNT3812	Ball Bearing	BNT3849	Clutch Plate
BNT2122	Click Pin	BNT3813	Damper Spring	BNT3850	Clutch Guard
BNT2123	Click Spring	BNT3816	Anti-Reverse Ratchet	BNT3851	Clutch Bar Guide A
BNT2125	Star Drag Spring	BNT3817	Drive Shaft	BNT3852	Quick-Fire II Clutch Bar
BNT2127	Star Drag Spacer	BNT3818	Drive Shaft Retainer	BNT3853	Clutch Bar Guide B
BNT2144	Washer	BNT3819	Ball Bearing	BNT3854	One-Piece Frame
BNT2146	Screw	BNT3820	Line Guide	BNT3855	Side Frame Plate
BNT2150	Line Guide Pawl	BNT3821	Level Wind Guide	BNT3902	Handle Retainer
BNT2154	Idle Gear	BNT3822	Worm Shaft		
BNT2164	Yoke	BNT3823	Worm Bushing A	BNT1713	Brake Collar (green) (accessory)
BNT2224	Spool Tension Spacer	BNT3825	Screw	BNT3174	Reel Seat Spacer (accessory)
BNT2400	Idle Gear	BNT3826	Clutch Cam Retainer	BNT3237	Wrench (accessory)