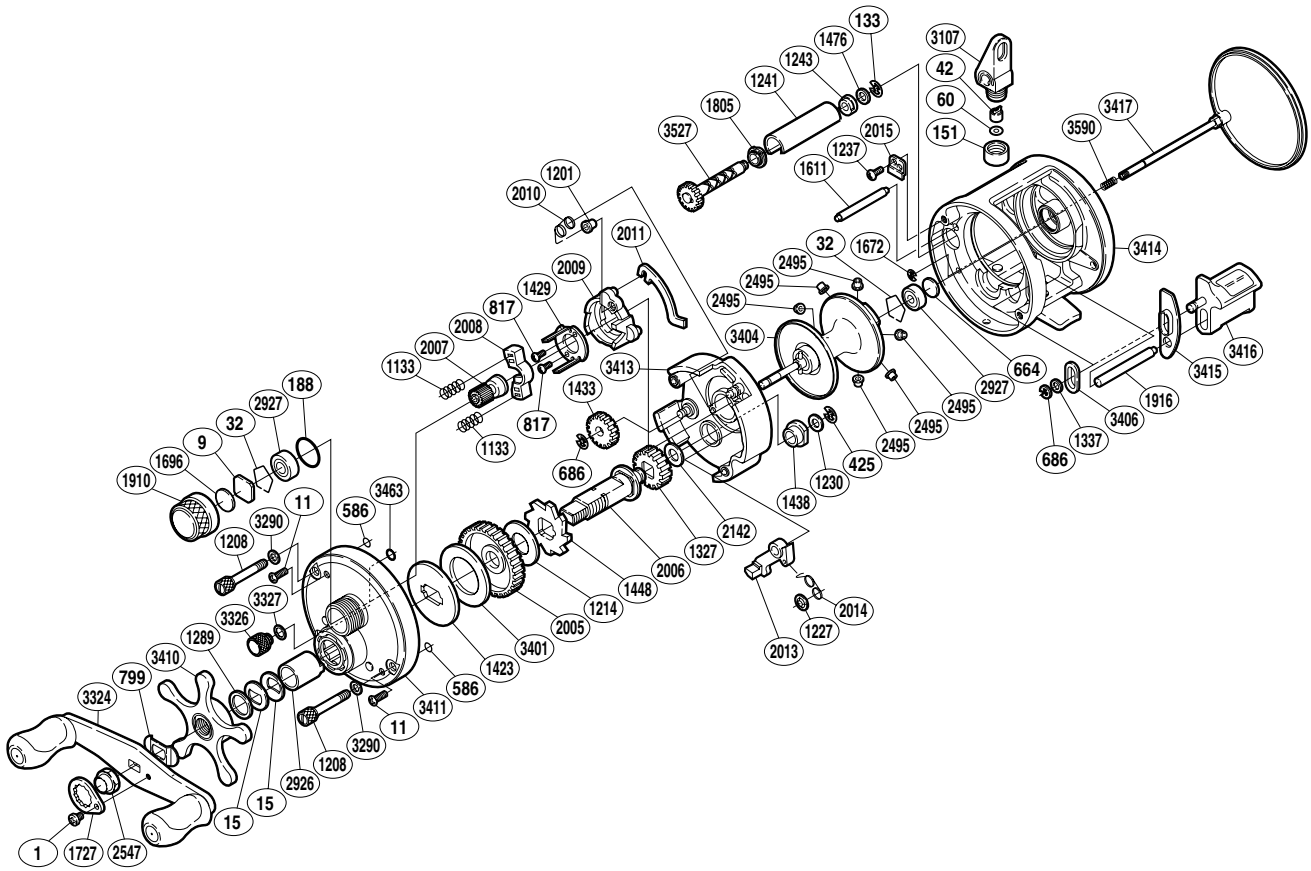


# SHIMANO®

## CALCUTTA A-RB

## CT-101B



(1RH316101U)

Part No.	Description	Part No.	Description	Part No.	Description
BNT0001	Screw	BNT1289	Star Drag Spacer	BNT2015	Worm Bushing A Retainer
BNT0009	Cast Control Spacer	BNT1327	Idle Gear A	BNT2142	Spacer
BNT0011	Screw	BNT1337	Spacer	BNT2495	Brake Collar (green)
BNT0015	Drag Spring Washer	BNT1423	Key Washer	BNT2547	Handle Nut
BNT0032	Bearing Retainer	BNT1429	Clutch Cam Retainer	BNT2926	Roller Clutch Inner Tube
BNT0042	Line Guide Pawl	BNT1433	Idle Gear B	BNT2927	Ball Bearing
BNT0060	Spacer	BNT1438	Drive Shaft Bushing	BNT3107	Line Guide
BNT0133	E Lock	BNT1448	Anti-Reverse Ratchet	BNT3290	Washer
BNT0151	Pawl Cap	BNT1476	Spacer	BNT3324	Handle Assembly
BNT0188	O Ring	BNT1611	Level Wind Guide	BNT3326	Side Plate Open Nut
BNT0425	E Lock	BNT1672	E Lock	BNT3327	Washer
BNT0586	O Ring	BNT1696	Cast Control Spacer B	BNT3401	Drag Washer
BNT0664	Spacer B	BNT1727	Handle Nut Plate	BNT3404	Spool Assembly
BNT0686	E Lock	BNT1805	Worm Bushing A	BNT3406	Clutch Bar Guide A
BNT0799	Friction Washer	BNT1910	Cast Control Cap	BNT3410	Star Drag
BNT0817	Screw	BNT1916	Clutch Bar Support	BNT3411	Left Side Plate
BNT1133	Yoke Spring	BNT2005	Drive Gear	BNT3413	Set Plate
BNT1201	Retractor Spring Collar	BNT2006	Drive Shaft	BNT3414	One-Piece Frame
BNT1208	Side Plate Bolt	BNT2007	Pinion Gear	BNT3415	Clutch Bar Guide B
BNT1214	Drag Washer	BNT2008	Yoke	BNT3416	Quick-Fire II Clutch Bar
BNT1227	Push Nut (SPN-2)	BNT2009	Clutch Cam	BNT3417	Right Side Plate
BNT1230	Spacer	BNT2010	Retractor Spring	BNT3463	Nut Retainer
BNT1237	Screw	BNT2011	Clutch Plate	BNT3527	Worm Shaft
BNT1241	Level Wind Guard	BNT2013	Clutch Pawl	BNT3590	Side Plate Spring
BNT1243	Worm Bushing B	BNT2014	Clutch Pawl Spring		

(170802)