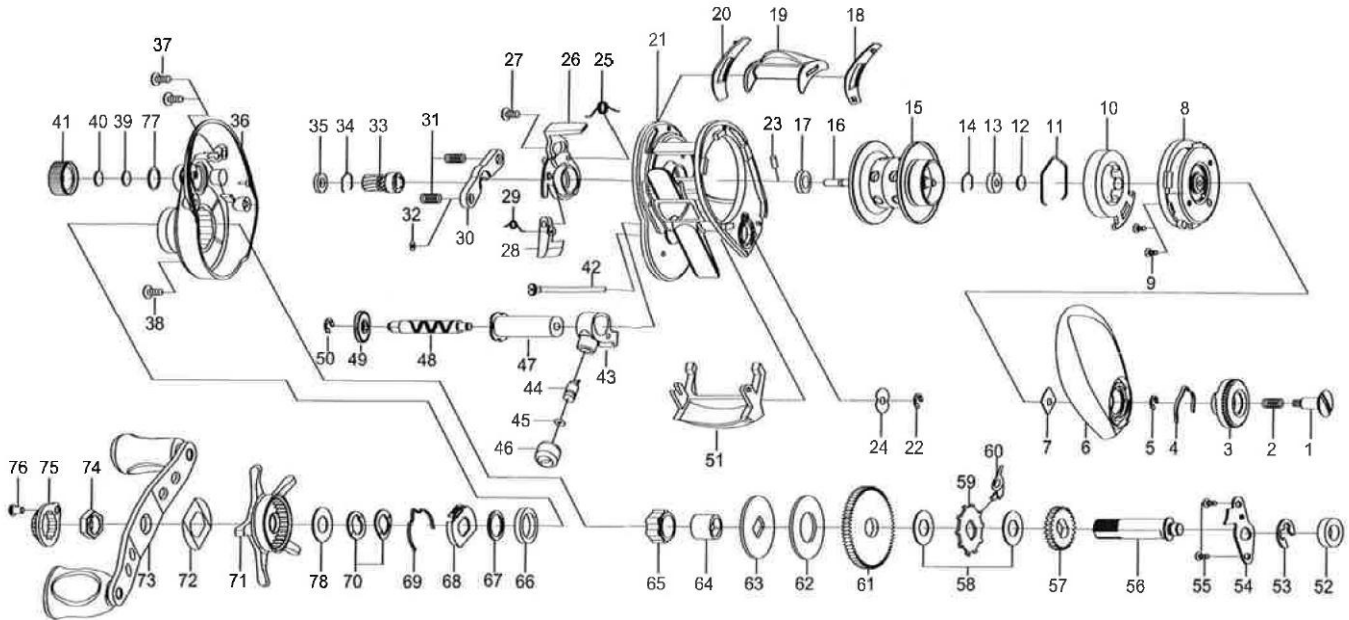


Please order by parts number, not key number
 Veuillez indiquer le numéro de la pièce (Non "Key" No.)

DAIWA
 BAITCASTING REEL

AIRD 100HL



KEY NO.	PART NO.	PART NAME	KEY NO.	PART NO.	PART NAME
1	460-5410	SET PLATE SCREW(S)	41	380-1660	CAST CONTROL CAP(S)
2	510-4450	SET PLATE SPRING	42	400-2531	LONG SCREW
3	550-1610	BRAKE ADJUST KNOB(S)	43	490-1080	LINE GUIDE
4	510-5060	BRAKE CLICK SPRING	44	400-2540	LINE GUIDE PAWL
5	200-0530	BRAKE DIAL RETAINER(A)	45	540-3980	WASHER(C)
6	230-2270	LEFT SIDE PLATE	46	380-0780	LINE PAWL CAP
7	410-1911	BRAKE DIAL RETAINER(B)	47	270-0720	LEVEL WIND GUIDE
8	220-2931	SET PLATE	48	470-1920	WORM SHAFT
9	460-3220	SCREW	49	240-2180	WORM SHAFT GEAR
10	240-1952	MAGNET HOLDER	50	200-0530	GEAR RETANER
11	430-1070	MAGNET HOLDER RET. RING	51	550-1620	FRAME PLATE
12	540-5990	SPACER(A)	52	140-1850	BALL BEARING(C)
13	140-1650	BALL BEARING(A)	53	200-0580	DRIVE GEAR SHAFT RETAINER(B)
14	430-1061	BEARING RETAINER	54	410-2210	DRIVE GEAR SHAFT RETAINER(A)
15-17,23	700-9480	SPOOL ASSEMBLY	55	460-3850	SCREW
18	410-2150	SPACER(B)	56	470-1940	DRIVE SHAFT
19	090-0260	CLUTCH LEVER(G)	57	240-2190	OSCILATING GEAR
20	410-2140	SPACER(C)	58	540-6840	SPACER(F)
21	110-1020	FRAME ASSEMBLY	59	240-2530	ANTI-REVERSE RATCHET
22	200-0530	WORM SHAFT RETAINER	60	530-0840	ANTI-REVERSE PAWL
23	400-2250	SPOOL PIN	61	250-1321	DRIVE GEAR(HL)
24	540-6060	WORM SHAFT WASHER	62	540-6880	DRAG WASHER
25	510-5070	CLUTCH CAM SPRING	63	540-6910	KEY WASHER
26	170-1330	CLUTCH CAM	64	150-2180	GEAR SHAFT COLLAR
27	460-5440	SCREW	65	140-1810	ROLLER CLUTCH
28	330-2830	CLUTCH TRIP PLATE	66	140-0610	BALL BEARING(D)
29	510-5080	CLUTCH CAM SPRING(B)	67	540-1570	SPACING WASHER
30	410-1920	YOKE	68	410-2220	PLATE
31	510-4430	YOKE SPRING	69	510-4760	LEAF SPRING(A)
32	540-6020	WASHER(B)	70	540-6390	DRAG SPRING WASHER
33	260-1690	PINION GEAR	71	320-1210	STAR DRAG
34	430-1061	BEARING RETAINER	72	510-3260	LEAF SPRING(B)
35	150-3020	BUSH	73	700-8420	HANDLE ASSEMBLY
36	230-2280	RIGHT SIDE PLATE	74	380-0880	HANDLE NUT
37	460-1570	SCREW	75	180-2470	HANDLE NUT PLATE
38	640-5450	SCREW	76	460-0450	SCREW
39	540-6850	SPACER(D)	77	430-1080	O-RING
40	540-4340	SPACER(E)	78	540-9020	WASHER(D)