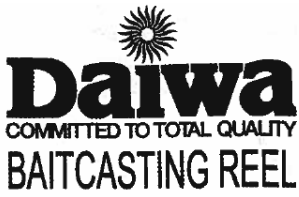
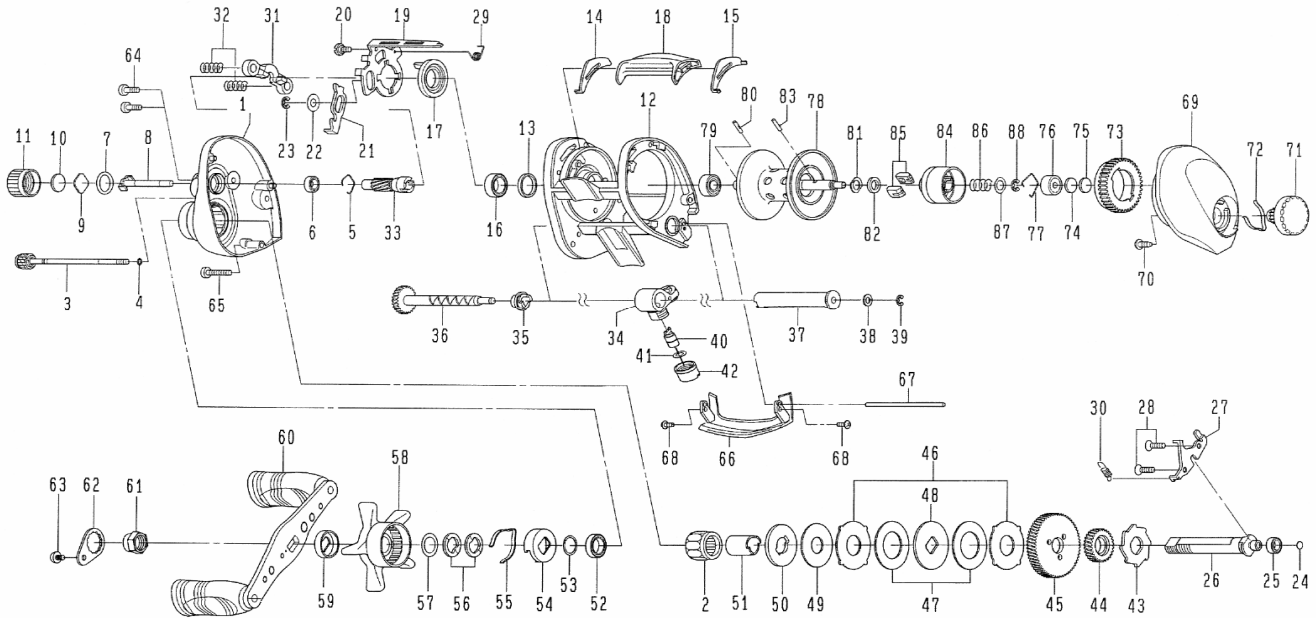


Please order by parts number, not key number
 Veuillez indiquer le numéro de la pièce.



TEAM DAIWA TIERRA 153HL



Key No.	Parts No.	Parts Name	Key No.	Parts No.	Parts Name
1	G60-1506	Left side plate	40	121-4212	Line guide pawl
2	G81-9801	Roller clutch	41	373-1300	Line guide washer
3	G71-8402	Left side plate screw (A)	42	F40-2801	Pawl cap
4	B85-3101	"O" ring (A)	43	F76-1701	Clutch wheel
5	E21-9701	Bearing retainer (A)	44	G00-1501	Drive gear (A)
6	G46-6202	Ball bearing (A)	45	G60-2101	Drive gear (B)
7	171-5201	"O" ring (B)	46	F79-6101	Eared washer
8	F80-0501	Pinion shaft	47	G42-8501	Drag washer (A)
9	B17-5401	Spool adjusting cap metal	48	F79-6301	Key washer (A)
10	B17-5503	Spacer (A)	49	G45-5801	Drag washer (B)
11	F57-4414	Cast control cap	50	G14-1801	Key washer (B)
12	G60-1705	Frame assembly	51	G54-5001	Gear shaft collar
13	F83-4701	Clutch cam washer	52	F58-2501	Ball bearing (D)
14	G54-3501	Spacer (B)	53	B55-3801	Bearing washer
15	G54-3401	Spacer (C)	54	F02-8201	Click leaf spring holder
16	B86-1701	Ball bearing (B)	55	F03-2401	Click leaf spring
17	F99-7401	Clutch cam (A)	56	150-8901	Drag spring washer
18	G54-3601	Clutch lever	57	373-7810	Spacing sleeve
19	G60-1801	Clutch cam (B)	58	F57-6502	Star drag
20	G00-9701	Clutch cam screw	59	F85-0401	Handle collar
21	G26-1101	Clutch trip plate	60	G87-9901	Handle assembly
22	371-6905	Washer	61	G79-3302	Handle nut(A)
23	320-1402	Retainer	62	040-3207	Handle nut plate
24	G35-7506	Drive shaft washer	63	353-8301	Handle nut screw
25	F05-5601	Ball bearing (C)	64	G04-0801	Left side plate screw (B)
26	G87-7202	Drive shaft	65	G47-3501	Left side plate screw (C)
27	G60-1901	Drive shaft retainer	66	G54-5308	Front plate
28	E13-4508	Drive shaft retainer screw	67	G54-5401	Stabilizer bar
29	G60-2201	Clutch cam spring	68	B36-0401	Front plate screw
30	G01-0201	Clutch trip plate spring	69	G60-5806	Right side plate
31	F99-8201	Yoke	70	F21-2201	Set plate screw
32	G59-7301	Yoke spring	71	F82-1215	Brake adjusting knob
33	G60-2001	Pinion gear	72	F26-2701	Brake click spring
34	G54-4301	Line guide	73	G54-5701	Magnet holder
35	G12-8201	Worm shaft holder	74	375-7411	Spacer(D)
36	G54-4601	Worm shaft assembly	75	375-7404	Spacer (E)
37	G54-4801	Level wind guard	76	637-4601	Ball bearing (F)
38	373-1306	Worm shaft washer	77	F03-2201	Bearing retainer (B)
39	320-5901	Worm shaft retainer	78-88	Z01-7366	Spool assembly