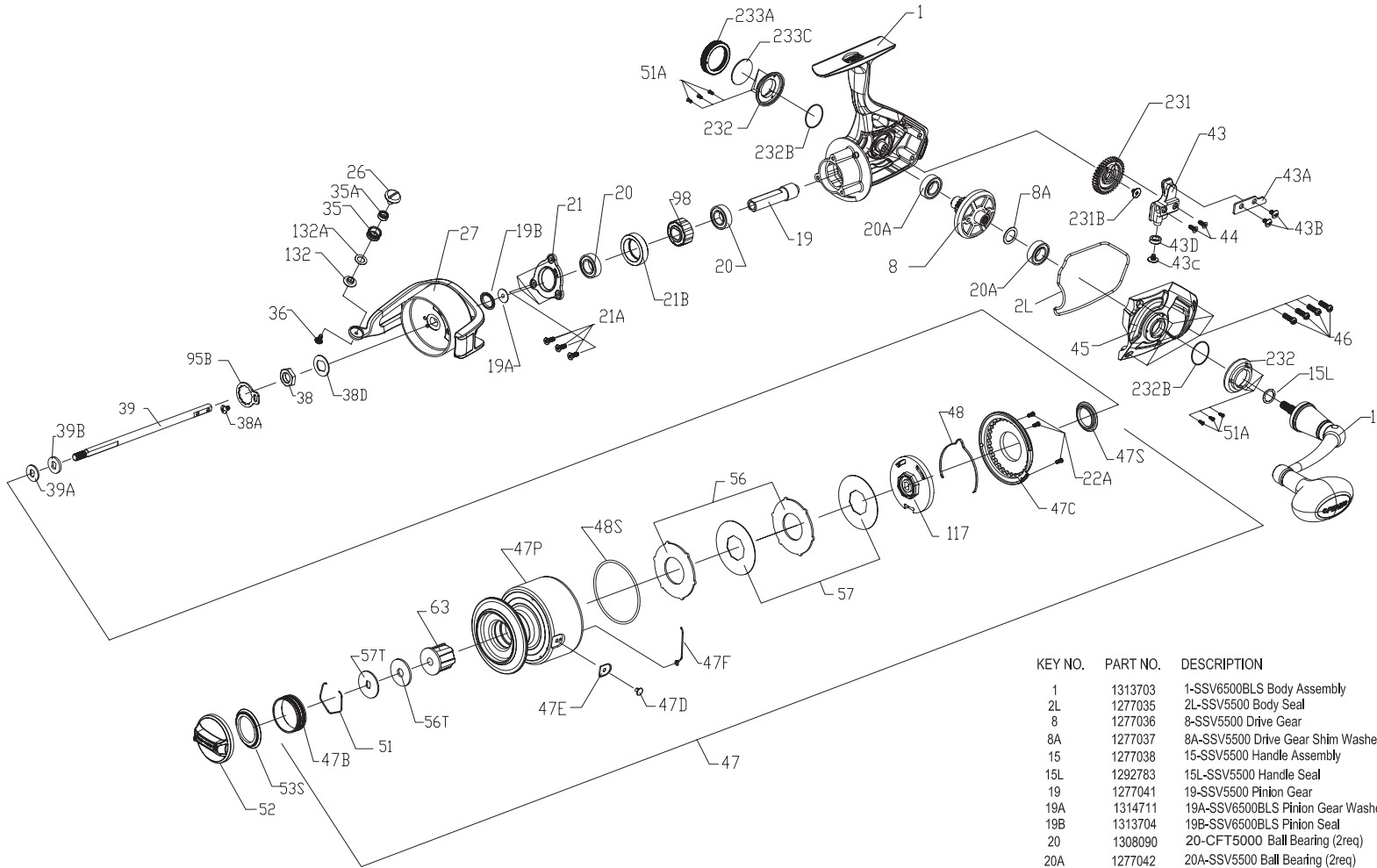




PARTS LIST FOR MODEL SSV6500BLS



KEY NO.	PART NO.	DESCRIPTION
35	1313708	35-SSV6500BLS Line Roller
35A	1277060	35A-SSV5500 Line Roller Ball Bearing
36	1277061	36-SSV5500 Line Roller Screw
38	1277062	38-SSV5500 Rotor Nut
38A	1277063	38A-SSV5500 Rotor Nut Lock Plate Screw
38D	1277064	38D-SSV5500 Rotor Washer
39	1277065	39-SSV5500 Main Shaft
39A	1277066	39A-SSV5500 Spool Adjust Washer
39B	1277067	39B-SSV5500 Main Shaft Washer
43	1277068	43-SSV5500 Oscillation Slider
43A	1277069	43A-SSV5500 Oscillation Slider Guide
43B	1277070	43B-SSV5500 Oscillation Slider Guide Screw (2req)
43C	1277071	43C-SSV5500 Oscillation Slider Bushing Screw
43D	1279457	43D-SSV3500 Oscillation Slider Bushing
44	1277072	44-SSV5500 Main Shaft Screw (2req)
45	1314299	45-SSV6500BLS Body Cover
46	1277074	46-SSV5500 Body Cover Screw (4req)
47	1314300	47-SSV6500BLS Spool Assembly
47B	1277076	47B-SSV5500 Spool Band
47C	1277077	47C-SSV5500 Drag Cover
47D	1277078	47D-SSV5500 Line Clip
47E	1277079	47E-SSV5500 Line Clip Bushing
47F	1277112	47F-SSV6500 Line Clip Retainer
47P	1314301	47P-SSV6500BLS Spool
47S	1277082	47S-SSV5500 Drag Drive Plate Seal
48	1277083	48-SSV5500 Spool Clicker
48S	1277084	48S-SSV5500 Drag Cover Seal
51	1277085	51-SSV5500 Drag Washer Retainer
51A	1277086	51A-SSV5500 Bearing Retainer Screw (6req)
52	1277114	52-SSV6500 Drag Knob Assembly
53S	1293252	53S-SSV5500 Drag Knob Seal
56	1277088	56-SSV5500 Drag Friction Washer (2req)
56T	1277089	56T-SSV5500 Drag Friction Washer
57	1277090	57-SSV5500 Keyed Drag Washer (2req)
57T	1277091	57T-SSV5500 Keyed Drag Washer
63	1277092	63-SSV5500 Spool Bushing
95B	1277093	95B-SSV5500 Rotor Nut Locking Plate
98	1277094	98-SSV5500 Clutch / Sleeve Assembly
117	1277095	117-SSV5500 Drag Drive Plate
132	1277096	132-SSV5500 Line Roller Collar
132A	1277097	132A-SSV5500 Line Roller Washer
231	1277098	231-SSV5500 Oscillation Gear
231B	1277100	231B-SSV5500 Oscillation Gear Screw
232	1277115	232-SSV6500 Bearing Retainer (2req)
232B	1302502	232B-SSV3500 Bearing Retainer O-Ring(2req)
233A	1277103	233A-SSV5500 Handle Cap
233C	1277104	233C-SSV5500 Handle Cap Washer
1	1313703	1-SSV6500BLS Body Assembly
2L	1277035	2L-SSV5500 Body Seal
8	1277036	8-SSV5500 Drive Gear
8A	1277037	8A-SSV5500 Drive Gear Shim Washer
15	1277038	15-SSV5500 Handle Assembly
15L	1292783	15L-SSV5500 Handle Seal
19	1277041	19-SSV5500 Pinion Gear
19A	1314711	19A-SSV6500BLS Pinion Gear Washer
19B	1313704	19B-SSV6500BLS Pinion Seal
20	1308090	20-CFT5000 Ball Bearing (2req)
20A	1277042	20A-SSV5500 Ball Bearing (2req)
21	1313705	21-SSV6500BLS Pinion Bearing Retainer
21A	1277044	21A-SSV5500 Pinion Retainer Screw (3req)
21B	1277045	21B-SSV5500 Pinion Ball Bearing Collar
22A	1277047	22A-SSV5500 Drag Cover Screw (3req)
26	1313706	26-SSV6500BLS Line Slider
27	1313707	27-SSV6500BLS Rotor

407-SSV6500BLS Rev2 10-01-14
1292946