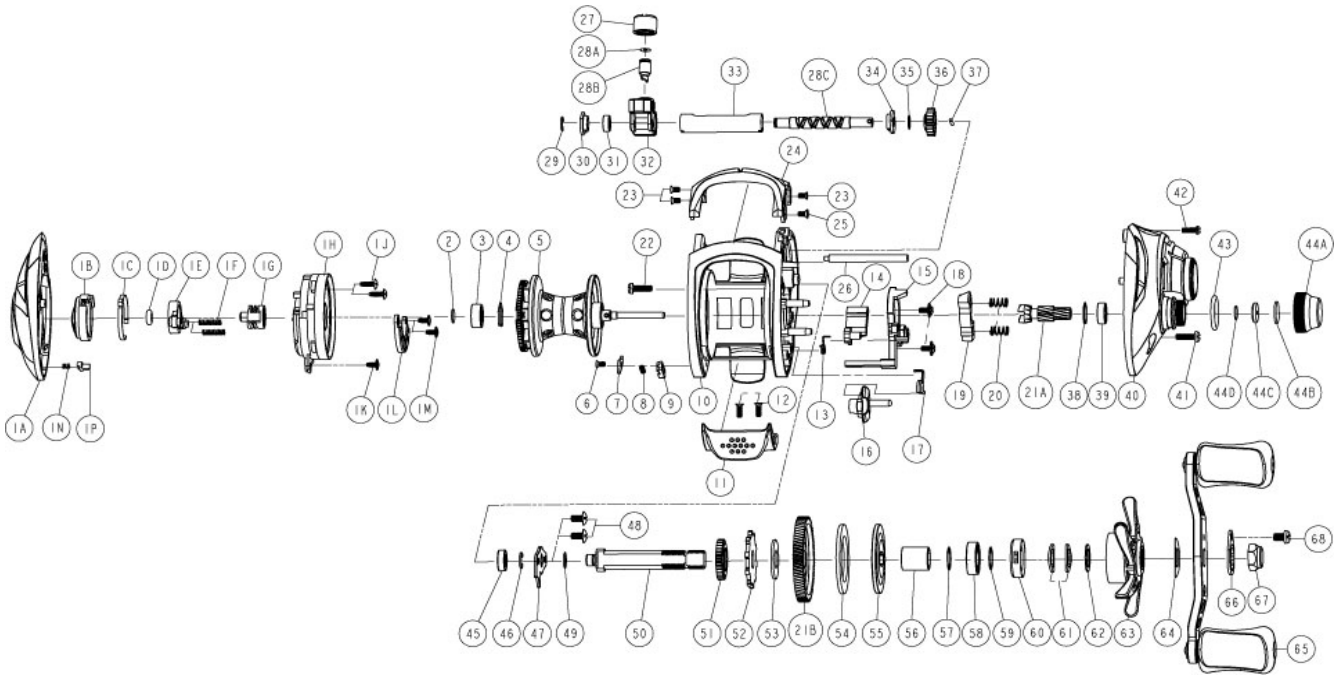


QUANTUM[®]

AC100HPTA



Quantum AC100HPTA Bait Cast Reel Part List

Key #	Description	Part No.	Qty.	Key #	Description	Part No.	Qty.
1	Palm Side Cover Kit	RA4023-01	1	29	Worm Shaft E-Clip	NX092-01	1
1A	Palm Side Cover Assembly	RA323-01	1	30	Worm Shaft Bushing	PA067-01	1
1B	Casting Control Dial	PA026-02	1	31	Worm Shaft Ball Bearing	PA017-01	1
1C	Control Dial Clicker Spring	MW108-01	1	32	Line Guide Carrier Assembly	EB347-03	1
1D	Control Dial Friction Ring	NX105-01	1	33	Worm Shaft Guide	PA016-01	1
1E	Slide Cam "A"	EB028-01	1	34	Worm Shaft Bushing	RA067-01	1
1F	Magnet Plate Spring	EB071-01	2	35	Worm Shaft Washer(Gear Side)	PA035-01	1
1G	Slide Cam "B"	NX028-01	1	36	Worm Shaft Pinion Gear	PA085-01	1
1H	Spool Cover Assembly	PA351-01	1	37	Worm Shaft E-Clip	NX090-01	1
1J	Spool Cover Screw "A"	PA076-01	2	38	Spool Tension Knob Bearing Retainer	EB080-01	1
1K	Spool Cover Screw "B"	EB125-01	1	39	Spool Tension Knob Ball Bearing	SW017-01	1
1L	Magnet Plate Assembly	EB330-01	1	40	Gear Side Cover Assembly	PA324-05	1
1M	Screw	EB125-01	2	41	Gear Side Cover Screw "A"	KW123-02	1
1N	Side Cover Locking Pin Spring	KW070-01	1	42	Gear Side Cover Screw "B"	PA123-01	1
1P	Side Cover Locking Pin	KW103-01	1	43	Spool Tension Knob O-Ring	RA101-01	1
2	Spool Shaft Washer(Palm Side)	QW032-04	1	44	Spool Tension Knob Kit	PA4033-03	1
3	Spool Shaft Ball Bearing(Palm Side)	QV017-01	1	44A	Spool Tension Knob	RA033-01	1
4	Bearing Retainer Ring	HV080-01	1	44B	Spool Cushion Washer	QW082-01	1
5	Spool Assembly	EB321-06	1	44C	Spool Tension Knob Collar	QW081-01	1
6	Locking Lever Retainer Screw	KW107-01	1	44D	Spool Tension Knob Washer	QW032-04	1
7	Locking Lever Retainer	KW056-01	1	45	Crank Shaft Ball Bearing	SW017-01	1
8	Locking Lever Spring	KW096-01	1	46	Crank Shaft E-Clip	QW120-01	1
9	Locking Lever	KW119-02	1	47	Crank Shaft Retainer Plate	KW002-01	1
10	Frame	PA001-03	1	48	Crank Shaft Retainer Plate Screw	QW125-02	2
11	Thumb Bar	PA009-03	1	49	Adjustment Washer	EB032-01	1
12	Thumb Bar Screw	EB107-01	2	50	Crank Shaft	EB008-01	1
13	Kick Lever Spring	EB097-01	1	51	Worm Shaft Drive Gear	ZW112-01	1
14	Kick Lever	EB077-01	1	52	Trip Ratchet	PA083-01	1
15	Release Slider	EB039-01	1	53	Trip Ratchet Washer	PA111-01	1
16	Flipping Switch	EB087-04	1	54	Drag Washer	UX059-01	1
17	Release Slider Spring	MW104-01	1	55	Drag Key Washer	PA045-01	1
18	Release Slider Screw	EB125-01	2	56	One Way Clutch Sleeve	PA052-01	1
19	Pinion Yoke	EB025-01	1	57	Bearing Washer	KW032-01	1
20	Pinion Yoke Spring	KW040-01	2	58	Crank Shaft Ball Bearing (Handle Side)	TW058-02	1
21	Gear Kit	QA4011-01	1	59	Star Drag Washer "A"	KW032-01	1
21A	Pinion Gear	PA011-01	1	60	Star Drag Clicker Spring Assembly	PA4114-01	1
21B	Drive Gear	UX012-01	1	61	Star Drag Spring Washer	JX046-01	2
22	Gear Side Cover Screw "A"	KW123-02	1	62	Star Drag Washer "B"	PA032-01	1
23	Front Support Screw "A"	KW107-01	3	63	Star Drag	PA055-03	1
24	Front Support	PA099-03	1	64	Handle Spring Washer	QW054-01	1
25	Front Support Screw "B"	PA107-01	1	65	Handle Assembly	RA318-01	1
26	Pillar	KW061-01	1	66	Handle Nut	KW003-03	1
27	Line Guide Pawl Screw	KW007-01	1	67	Handle Nut Retainer	KW034-05	1
28	Worm Shaft Kit	PA4072-01	1	68	Handle Nut Retainer Screw	QW123-02	1
28A	Line Guide Pawl Washer	BV035-01	1				
28B	Line Guide Pawl	KW006-01	1				
28C	Worm Shaft	PA072-01	1				