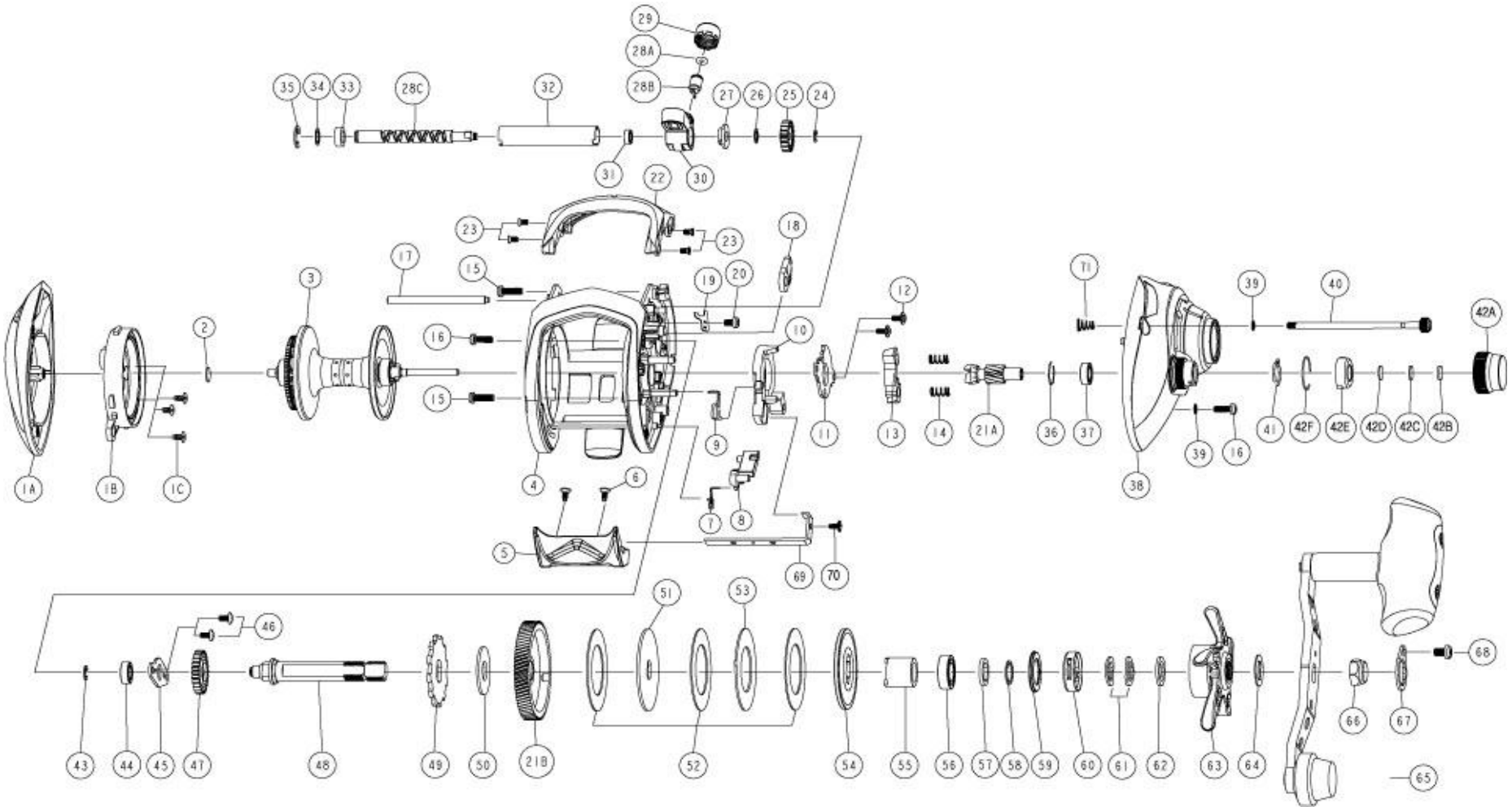


# QUANTUM<sup>®</sup>

## IR300SPTP



# QUANTUM<sup>®</sup>

## IR300SPTP

### Quantum IR300SPTP Baitcast Reel Part List

Key #	Description	Part No.	Qty.	Key #	Description	Part No.	Qty.
1	Palm Side Cover Kit	JA4023-01	1	36	Spool Tension Knob Bearing Retainer	EB080-01	1
1A	Palm Side Cover	JA023-01	1	37	Spool Tension Knob Ball Bearing	SW017-01	1
1B	Spool Cover Assembly	JA351-01	1	38	Gear Side Cover Assembly	JA324-03	1
1C	Spool Cover Screw	JA076-01	3	39	Nylon Washer	LA031-01	2
2	Spool Shaft Washer(Palm Side)	QW032-04	1	40	Thumb Screw	JA050-01	1
3	Spool Assembly	JA351-01	1	41	Spool Tension Knob Click Spring	PA114-01	1
4	Frame Assembly	JA301-01	1	42	Spool Tension Knob Kit	PA4033-06	1
5	Thumb Bar	JA009-01	1	42A	Spool Tension Knob	PA033-04	1
6	Thumb Bar Screw	EB107-01	2	42B	Spool Cushion Washer	EX082-01	1
7	Kick Lever Spring	JA097-01	1	42C	Spool Tension Knob Washer "B"	PW032-01	1
8	Kick Lever	JA077-01	1	42D	Spool Tension Knob Washer "A"	QW032-04	1
9	Release Slider Spring	JA104-01	1	42E	Click Ratchet	PW113-01	1
10	Release Slider	JA039-01	1	42F	C-Ring	PW080-01	1
11	Release Slider Plate	JA161-01	1	43	Crank Shaft E-Clip	PA090-01	1
12	Release Slider Screw	EB125-01	2	44	Crank Shaft Ball Bearing	SW017-01	1
13	Pinion Yoke	FB028-01	1	45	Crank Shaft Retainer Plate	JA094-01	1
14	Pinion Yoke Spring	KW040-01	2	46	Crank Shaft Retainer Plate Screw	JA136-01	1
15	Gear Side Cover Screw "A"	JA123-01	2	47	Worm Shaft Drive Gear	JA112-01	1
16	Gear Side Cover Screw "B"	JA107-01	2	48	Crank Shaft	JA008-01	1
17	Pillar	JA061-01	1	49	Trip Ratchet	JA083-01	1
18	Stopper Assembly	JA063-01	1	50	Trip Ratchet Washer	JA111-01	1
19	Plate	JA030-01	1	51	Drag Washer	KA045-01	1
20	Plate Screw	JA107-01	1	52	Drag Key Washer "A"	JA059-01	3
21	Gear Kit	JA4011-02	1	53	Drag Key Washer "B"	JA048-01	1
21A	Pinion Gear	JA011-02	1	54	Drag Key Washer "C"	JA045-01	1
21B	Drive Gear	JA012-02	1	55	One Way Clutch Sleeve	JA052-01	1
22	Front Support	JA099-01	1	56	Crank Shaft Ball Bearing (Handle Side)	TW058-02	1
23	Front Support Screw	KW107-01	4	57	Collar	JA081-01	1
24	Worm Shaft E-Clip	NX090-01	1	58	Bearing Washer	KW032-01	1
25	Worm Shaft Pinion Gear	JA085-01	1	59	Rubber	JA155-01	1
26	Worm Shaft Washer(Gear Side)	PA035-01	1	60	Star Drag Clicker Spring Assembly	PA4114-01	1
27	Worm Shaft Bushing	RA067-01	1	61	Star Drag Spring Washer	JX046-01	2
28	Worm Shaft Kit	JA4072-01	1	62	Star Drag Washer	JA032-01	2
28A	Line Guide Pawl Washer	BV035-01	1	63	Star Drag	PA055-05	1
28B	Line Guide Pawl	KW006-01	1	64	Handle Washer	JA054-01	1
28C	Worm Shaft	JA072-01	1	65	Handle Assembly	KA318-01	1
29	Line Guide Pawl Screw	KW007-01	1	66	Handle Nut	JA003-01	1
30	Line Guide Carrier Assembly	JA347-01	1	67	Handle Nut Retainer	KW034-04	1
31	Worm Shaft Ball Bearing	PA017-01	1	68	Handle Nut Retainer Screw	QW123-02	1
32	Worm Shaft Guide	JA016-01	1	69	Release Slider Link	JA036-01	1
33	Worm Shaft Bearing	JA017-01	1	70	Release Slider Link Screw	EB125-01	1
34	Worm Shaft Washer(Palm Side)	EB032-01	1	71	Spring	JA096-01	1
35	Worm Shaft E-Clip	JA090-01	1				