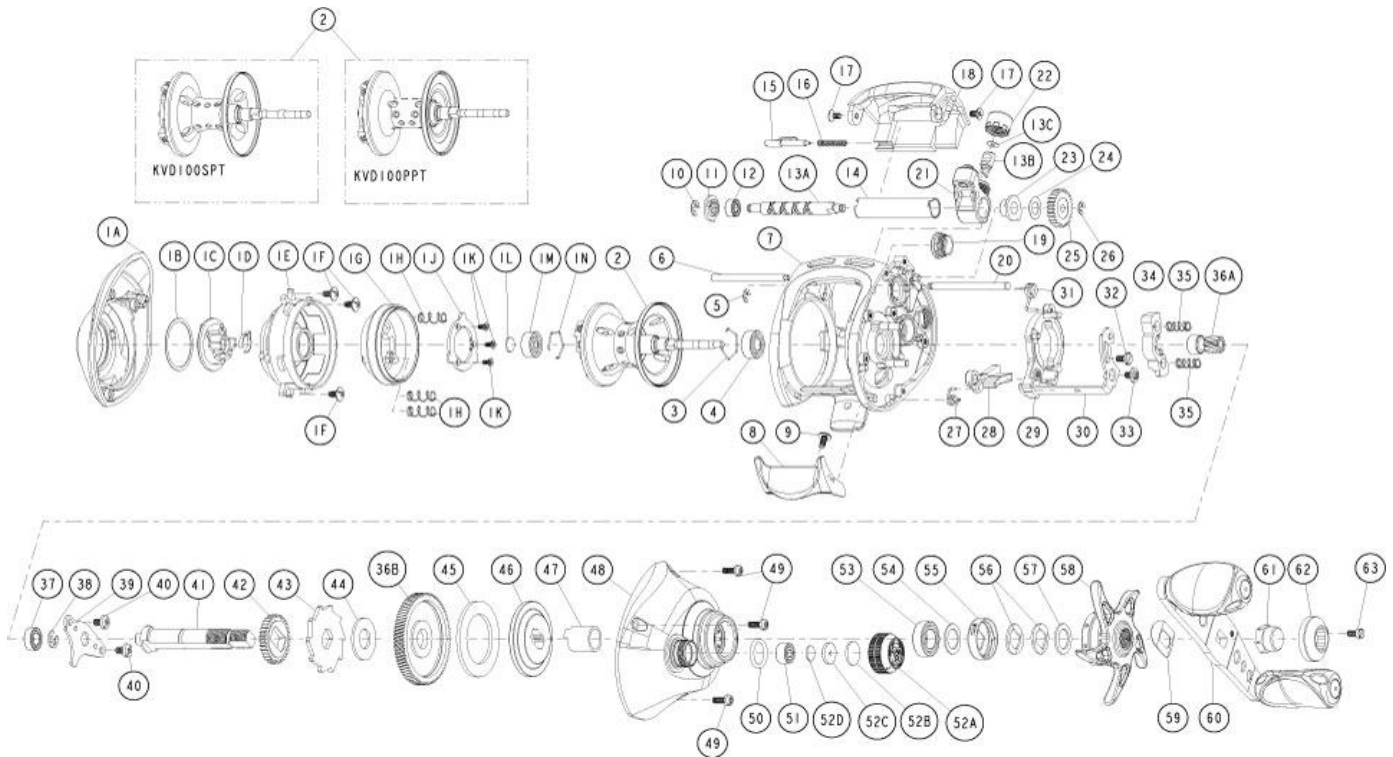


# QUANTUM

## KVD100SPTA



Quantum KVD100SPTA Baitcast Reel Part List

Key #	Description	Part No.	Qty.	Key #	Description	Part No.	Qty.
1	Palm Side Cover Kit include	DW4023-04	1	28	Kick Lever	DW077-01	1
1A	Palm Side Cover Assembly	DW323-04	1	29	Release Slider	DW039-01	1
1B	Centrifugal Dial Washer	DW111-01	1	30	Release Slider Link	DW036-01	1
1C	Centrifugal Dial Assembly	DW326-07	1	31	Release Slider Spring	DW104-01	1
1D	Centrifugal Dial Spring	CX108-01	1	32	Release Slider Link Screw	EW125-01	1
1E	Spool Cover	DW051-02	1	33	Release Slider Screw	CX076-03	1
1F	Spool Cover Screw	DW125-01	3	34	Pinion Yoke	EW025-01	1
1G	Brake Ring Assembly	DW342-01	1	35	Yoke Spring	GX040-01	2
1H	Brake Ring Slider Spring	DW070-01	3	36	Gear Kit Include	EW4011-01	1
1J	Brake Ring Slider Spring Retainer	DW129-01	1		36A - Pinion Gear Assembly	EW311-01	1
1K	Brake Ring Retainer Screw	DW107-01	3		36B - Drive Gear	UX012-01	1
1L	Spool Tension Shim	QW032-04	1	37	Crank Shaft Ball Bearing - L	SW017-01	1
1M	Spool Shaft Ball Bearing - Palm	QV017-01	1	38	E-Clip	QW120-01	1
1N	Clip Ring	HV080-01	1	39	Crank Shaft Retainer	DW002-01	1
2	Spool Assembly	FW321-11	1	40	Crank Shaft Retainer Screw	JX107-02	2
3	Clip Ring	EX080-01	1	41	Crank Shaft	DW008-01	1
4	Spool Shaft Ball Bearing - Gear	EX017-02	1	42	O/S Drive Gear	DW112-01	1
5	E-Clip	NX090-01	1	43	Trip Ratchet	DW083-01	1
6	Stabilizer Bar - A	DW061-01	1	44	Trip Ratchet Washer	QW111-01	1
7	Frame	DW001-31	1	45	Drag Disc	UX059-01	1
8	Thumb Bar	DW009-02	1	46	Drag Washer	DW045-01	1
9	Thumb Bar Screw	CW125-01	1	47	One Way Clutch Sleeve	UX052-01	1
10	E-Clip	NX092-01	1	48	Gear Side Cover Assembly	DW324-35	1
11	Worm Shaft Bearing Retainer	DW067-01	1	49	Gear Side Cover Screw	BV123-05	3
12	Worm Shaft Ball Bearing	XX117-01	1	50	Tension Knob O-Ring	QW101-01	1
13	Worm Shaft Kit include	HV4072-02	1	51	Tension Knob Ball Bearing	SW117-01	1
	13A - Worm Shaft	HV072-02	1	52	Spool Tension Knob Kit include	DW4033-07	1
	13B - Line Guide Pawl	CX006-01	1		52A - Spool Tension Knob	DW033-07	1
	13C - Line Guide Carrier Washer	BV035-01	1		52B - Spool Cushion Washer	QW082-01	1
14	Worm Shaft Guide	DW016-01	1		52C - Spool Tension Collar	QW081-01	1
15	Side Cover Locking Lever	YX119-02	1		52D - Spool Tension Washer	QW032-04	1
16	Side Cover Locking Lever Spring	ZW096-01	1	53	Crank Shaft Ball Bearing	TW058-01	1
17	Hood Screw	HX107-02	2	54	Crank Shaft Ball Bearing Washer	TW035-02	1
18	Hood	DW027-07	1	55	Drag Click Spring Assembly	YX4114-01	1
19	Oil Cap Screw	DW150-07	1	56	Drag "D" Washer	JX046-01	2
20	Stabilizer Bar - B	WP061-01	1	57	Star Drag Washer	ZW032-01	1
21	Line Guide Carrier	DW047-02	1	58	Star Drag	DW055-07	1
22	Line Guide Carrier Screw	ZW007-01	1	59	Handle Washer	NX054-01	1
23	Worm Shaft Bushing - Gear Side	DW068-01	1	60	Handle Assembly	DW318-22	1
24	O/S Pinion Gear Washer	EX035-01	1	61	Handle Nut	DW003-05	1
25	O/S Pinion Gear	DW085-01	1	62	Handle Nut Cap	DW034-02	1
26	E-Clip	NX090-01	1	63	Handle Nut Cap Screw	DW050-02	1
27	Kick Lever Spring	GX097-01	1				